

EPF Composer

Features & Benefits

- Capture and extend method content
 - Roles
 - Tasks
 - Work Products
 - Guidance
- Describe process patterns
- Configure processes
- Publish process content
- Manage process assets
- Extend base processes
- Tailor process to organization- and domain-specific needs
- Accompanied by Open Unified Process (OpenUP) process library
- Provide forum for industry process investments to converge
 - UP, Agile, DSDM, MDA, TOGAF
- Provide foundation for reusing, sharing, integrating, and tailoring various process assets
- Open source

Overview

EPF Composer is an open source tool for authoring development method content and publishing processes (such as software development, systems engineering, enterprise architecture). It allows an organization to construct a process from the ground-up, customize an existing process framework, and integrate a family of processes. EPF Composer is the result of the Eclipse Process Framework (EPF) project (see www.eclipse.org/epf for more details).



Description

EPF Composer uses a forms-based approach to defining method content (such as roles, tasks, and work products) in an Eclipse IDE. Method content is then configured into process patterns using various breakdown structures and activity models. The process patterns are in turn assembled into complete processes. Processes can then be published as a website.

Method content is comprised of:

- Roles, tasks, work products
- Disciplines, domains
- Guidance (checklists, templates, examples, guidelines, etc)

Processes are configurations of method content arranged by:

- Phases, iterations, activities
- Milestones, team profiles

EPF Composer is accompanied by OpenUP, a base process for small, co-located development teams that can be extended and customized to each organization's needs.

Price

Free. Subject to Eclipse Public License

Product

03-0301

Audience

- Process architect
- Process author
- Process coach
- Project manager
- IT manager

System requirements

- Eclipse 3.2

About Armstrong Process Group

Armstrong Process Group, Inc., (APG) focuses on helping organizations adopt more effective business management and software engineering practices through strategic planning, classroom training, and project coaching. APG is an Influencing member of the Object Management Group (OMG) and contributes to the UML 2.0 and SPEM 2.0 specifications and is a MDA FastStart Qualified Service Provider. APG is a member of The Open Group Architecture Forum and co-leads the MDA-TOGAF synergy project. APG is also a contributor to the Eclipse Process Framework (EPF) initiative. APG is an IBM Business Partner and an IBM Independent Software Vendor (ISV). APG has set of products designed to help organizations and individuals improve their skills through the APG Rational Certification Preparation Exam Suites and the APG Professional Development RUP Plug-In. Armstrong Process Group is a privately-held corporation located in New Richmond, Wisconsin.

Proven ▶▶▶▶▶ Practical ▶▶▶▶▶ Process™

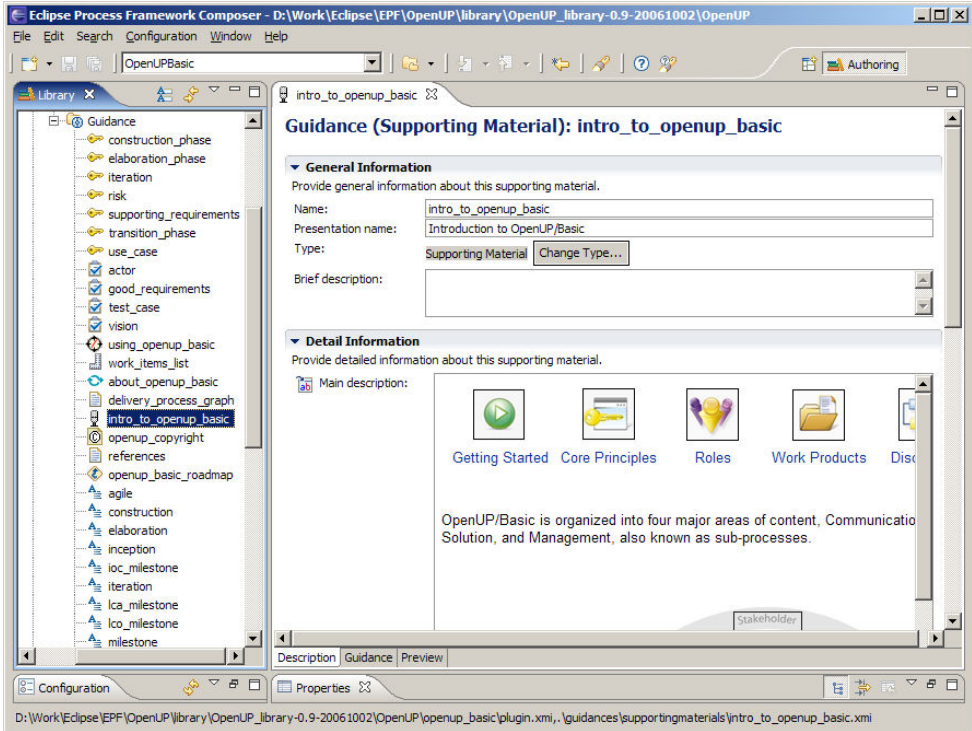


Figure 1 Introduction to OpenUP

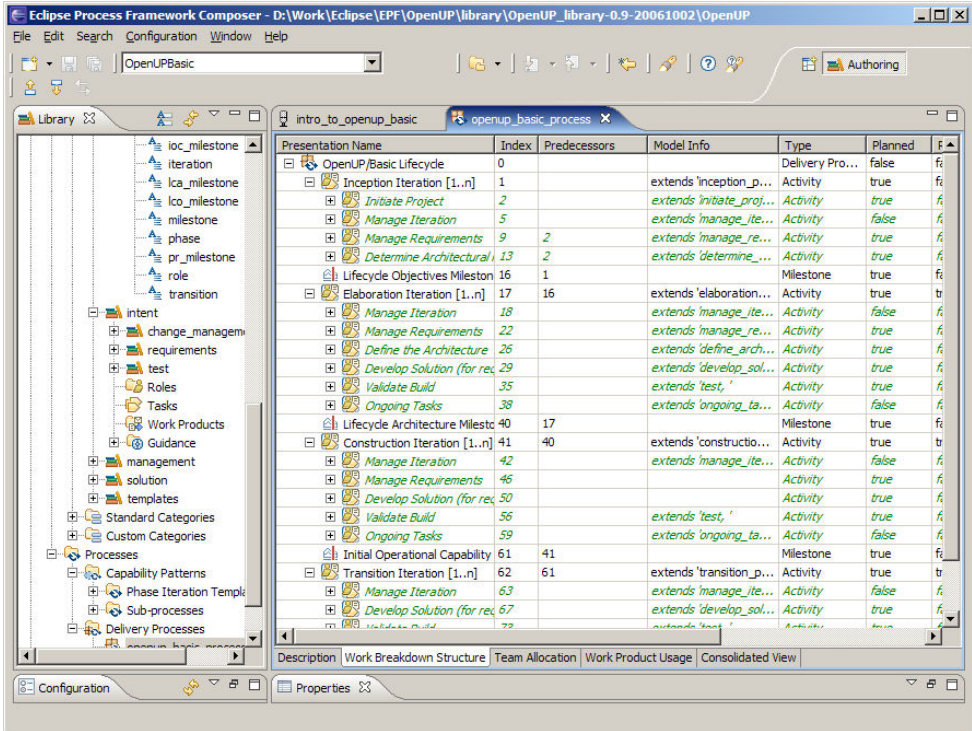


Figure 2 OpenUP Lifecycle

Proven ▶▶▶▶▶ Practical ▶▶▶▶▶ Process™

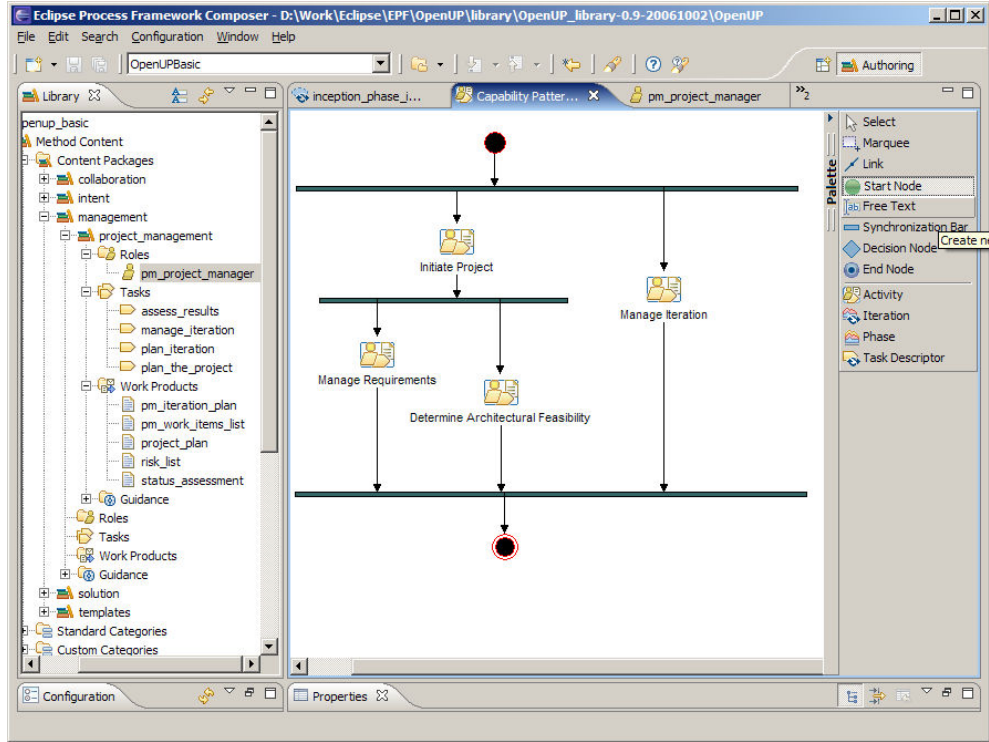


Figure 3 Inception Iteration Workflow

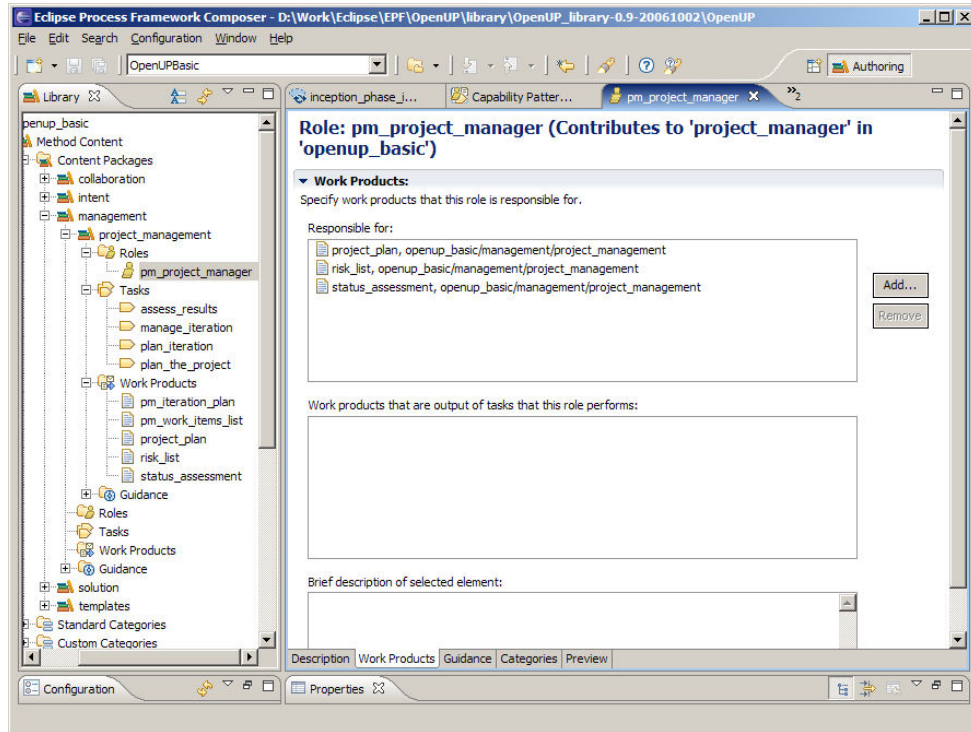


Figure 4 Project Manager Role

Proven ▶▶▶▶▶ Practical ▶▶▶▶▶ Process™

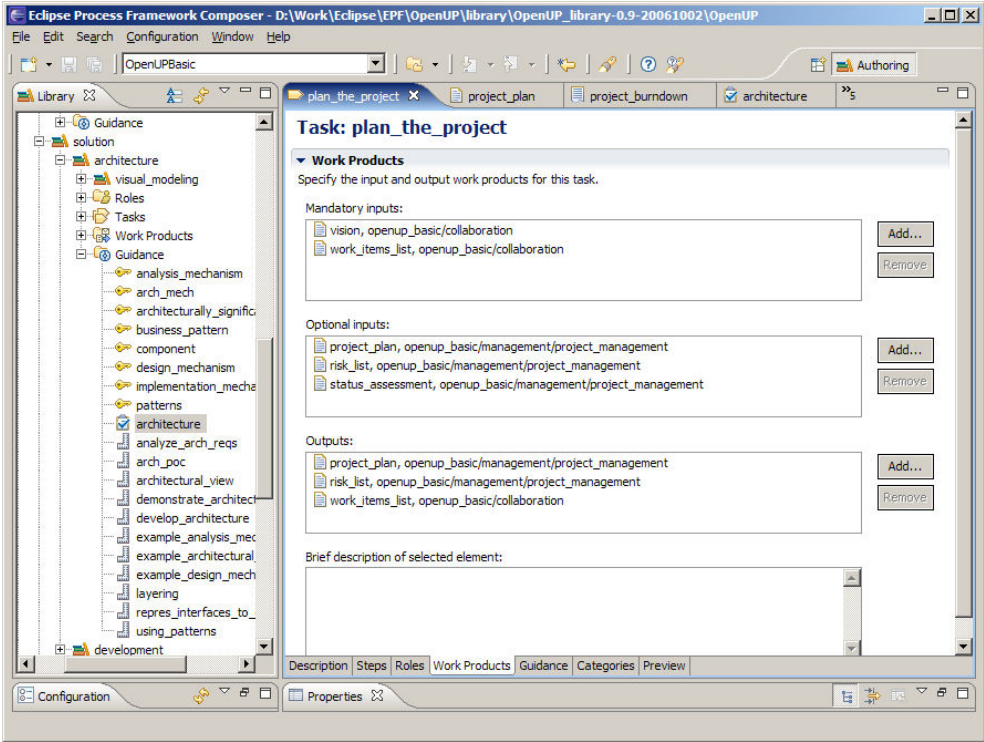


Figure 5 Plan Project Task

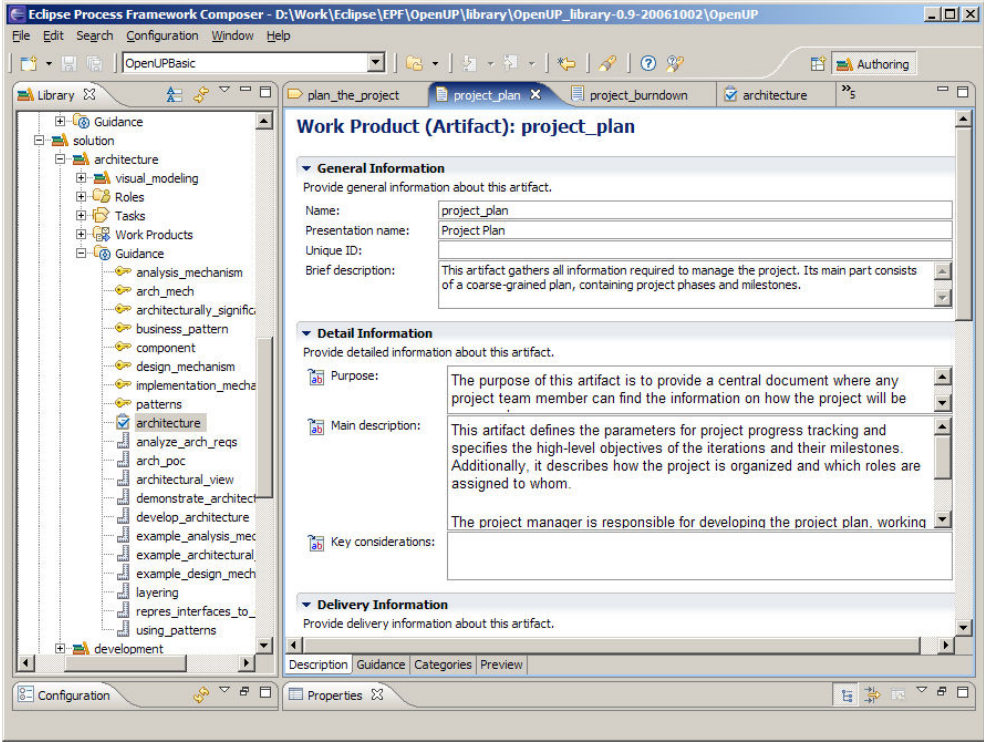


Figure 6 Project Plan Work Product

Proven >>>>>>> Practical >>>>>>> Process™

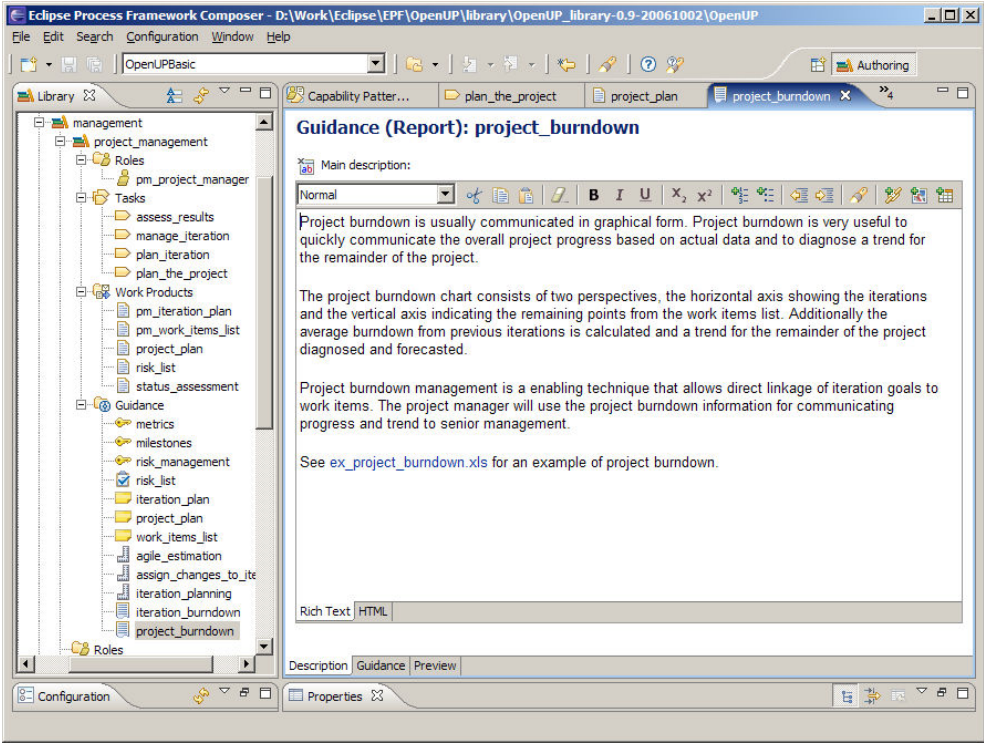


Figure 7 Project Burndown Example

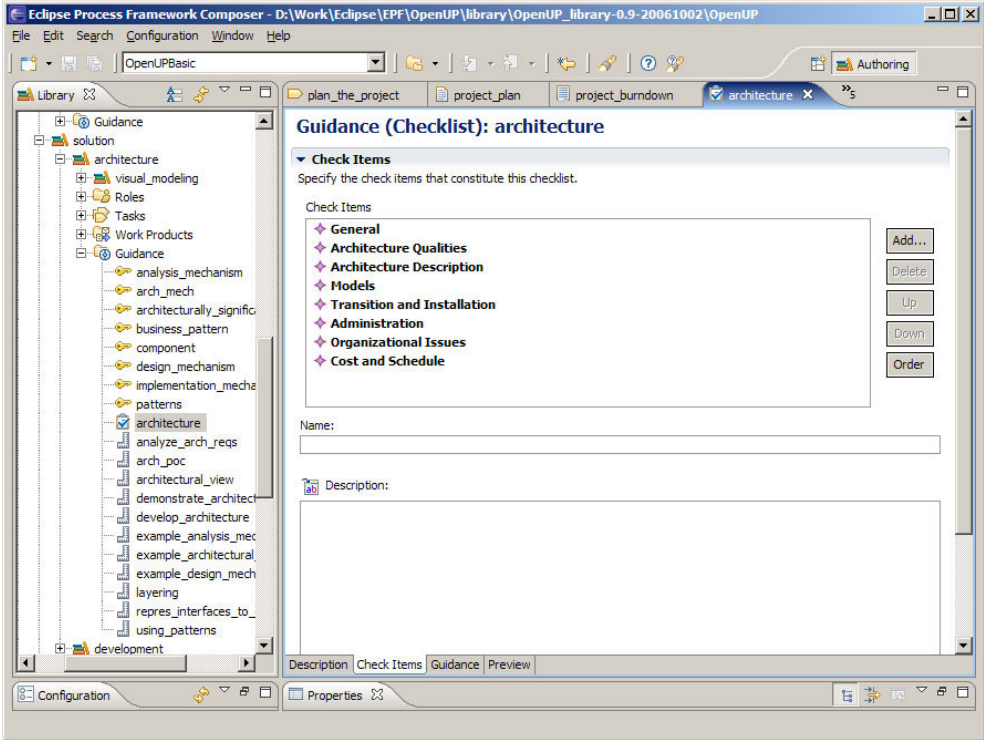


Figure 8 Architecture Checklist

Proven ▶▶▶▶▶ Practical ▶▶▶▶▶ Process™